

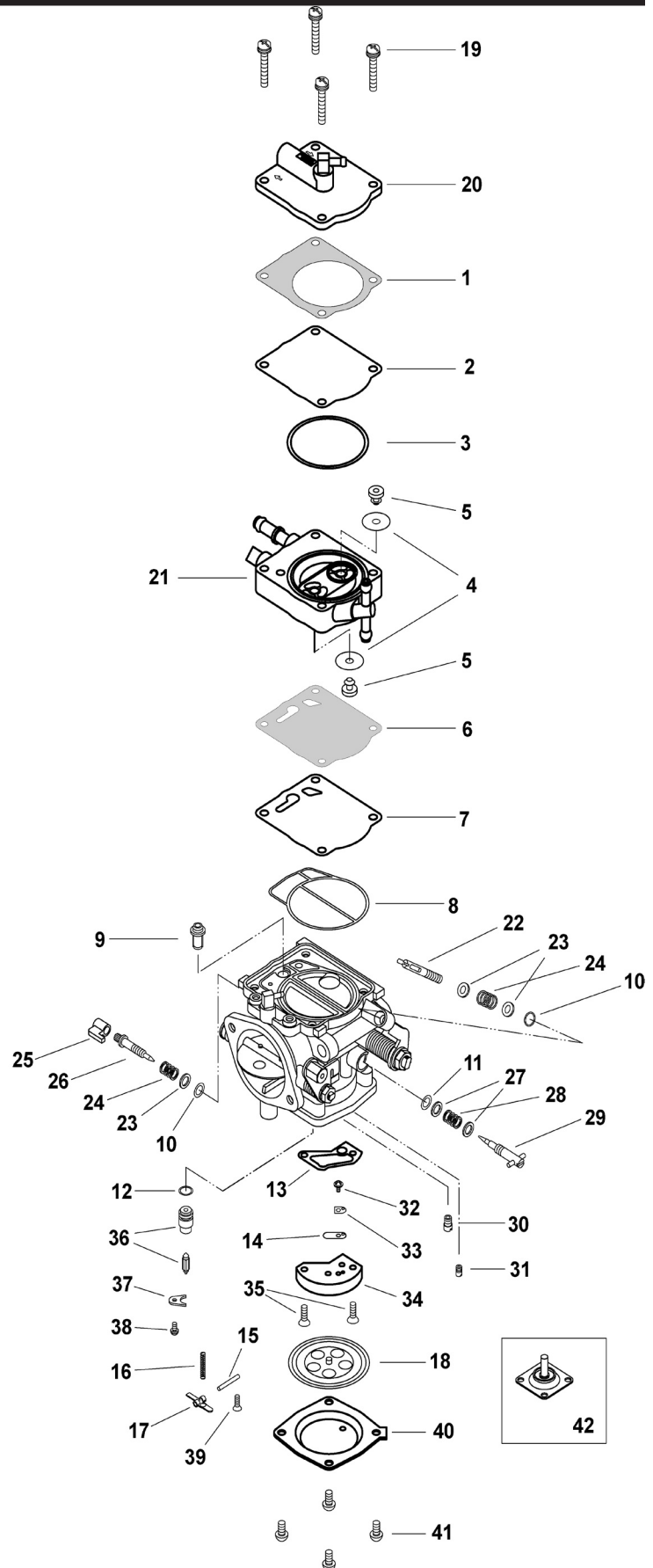


BN46 I Rebuild Kit

No.	Part Number	Description
1.	BN46I/13	Gasket, Pump
2.	BN46I/14	Diaphragm, Pump (Clear)
3.	616-73002	O-Ring
4.	BN46I/11	Check Valve (2)
5.	BN34/125	Grommet (2)
6.	BN46I/34	Diaphragm, Damper
7.	BN46I/15	Diaphragm, Damper (Clear)
8.	616-73003	O-Ring
9.	BN44/146	Filter, Fuel
10.	B30/305	O-Ring, Hi Speed (2)
11.	MD12/16	O-Ring, Low Speed
12.	KV/10	O-Ring, Needle Valve
13.	BN34/123	Gasket, Valve Body
14.	BN34/107	Check Valve (Clear)
15.	VM30/97	Pin, Arm
16.	730-03034	Spring, Arm 95 gram
17.	BN38/534	Arm (Stainless)
18.	BN44/145	Diaphragm assy., Main

NOTE: Kit contains parts 1 through 18

19.	BN34/120-35	Screw w/ washers (4)**
20.	BN46I/xx	Cover, Pump
21.	BN46I/49	Body Assy., Pump
22.	BN38I/40	Stop Screw, Idle
23.	BN38/39	Washer, Aluminum (3)
24.	BN38/344	Spring (2)
25.	999-904-006	Cap, Hi Speed Adjuster
26.	604-25017	Adjuster, Hi Speed
27.	BN38/172	Washer, Aluminum (2)
28.	BN38/343	Spring, Low Speed
29.	BN38/477	Adjuster, Low Speed
30.	N102.221-size	Jet, Hi Speed
31.	N100.606-size	Jet, Low Speed
32.	BV15/121-05-GG	Screw
33.	BN34/108-GG	Plate, Valve
34.	BN44/165	Valve Body Assy.
35.	C5=0414-G	Screw (2)
36.	786-35018-size	Needle Valve Assy.
37.	BN34/117-GG	Plate, Needle Valve rtnr
38.	CW2=0307-G	Screw w Washer
39.	C6=0308-G	Screw
40.	BN44/147	Cover (Stainless)
41.	C2S=0514	Screw (4)**
42.	BN40I/22	Diaphragm, Acclr. Pump



****Tightening Torque:**

Part No. 19: 4.5 N/m (45 Kg/Cm)

Part No. 41: 3.5 N/m (35 Kg/Cm)